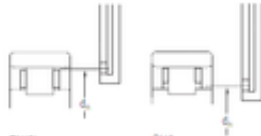
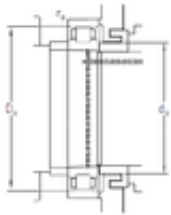
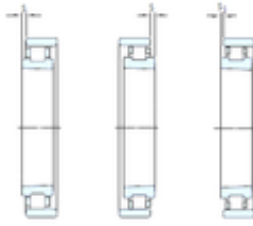




DPA Bearing Sales Corp.



40 mm x 68 mm x 15 mm SKF N 1008 KTNHA/SP High Load Capacity Precision Bearings

Bearing No. N 1008 KTNHA/SP

N 1008 KTNHA/SP Bearing 2D drawings and 3D CAD models

Size	40x68x15 mm
Bore Diameter	40 mm
Outer Diameter	68 mm
Width	15 mm
d	40 mm
D	68 mm
B	15 mm
C	15 mm
d1	50,6 mm
r1 min.	1 mm
r2 min.	1 mm
r3 min.	0,6 mm
r4 min.	0,6 mm
E	61 mm
da min.	45 mm
Da min	62 mm
Da max.	63 mm
rb max.	1 mm
S	2 mm
S1	1,5 mm
dh	– mm
Weight	0,19 Kg
Basic dynamic load rating (C)	24,2 kN
Basic static load rating (C0)	26,5 kN



DPA Bearing Sales Corp.

(Grease) Lubrication Speed	22 000 r/min
(Oil) Lubrication Speed	32 000 r/min
d_1	50.6 mm
$r_{1,2}$ min.	1 mm
$r_{3,4}$ min.	0.6 mm
s max.	2 mm
s_1 max.	1.5 mm
d_a min.	45 mm
D_a min.	62 mm
D_a max.	63 mm
r_a max.	1 mm
Basic dynamic load rating C	24.2 kN
Basic static load rating C_0	26.5 kN
Fatigue load limit P_u	3.05 kN
Attainable speed for grease lubrication	22000 r/min
Attainable speed for oil-air lubrication	32000 r/min
Reference grease quantity G_{ref}	2.5 cm ³
Static radial stiffness (guideline value)	430 N/ μ m
Mass bearing	0.19 kg